



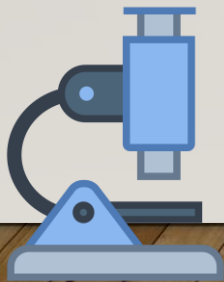
ST. PAUL'S COLLEGE
聖保羅書院

FOUNDED 1851



CHOOSING ELECTIVES

F3 CAREERS AND LIFE PLANNING PRESENTATION

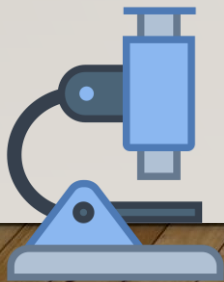


Understand

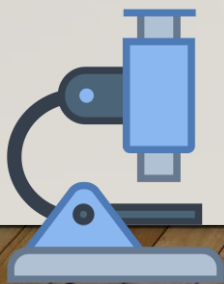
YOURSELF

THE ELECTIVES

Electives, MI/M2 and University



Understand YOURSELF

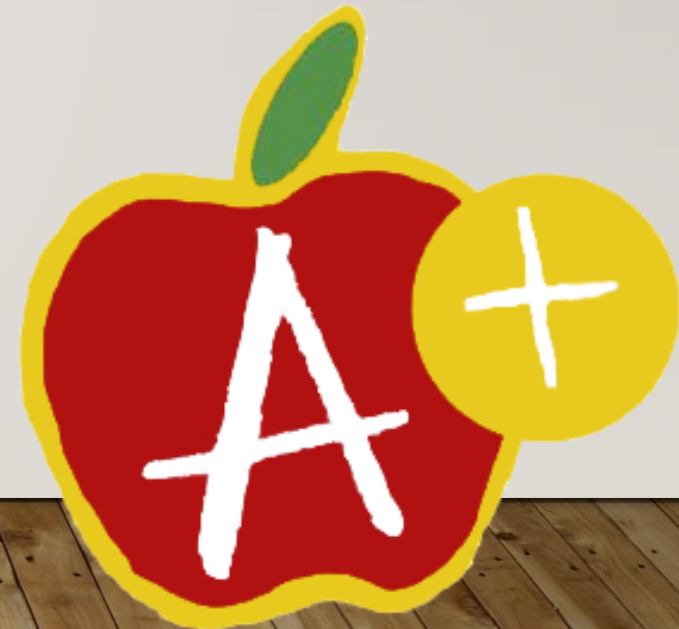


Understand yourself

Interests



Ability



Understand yourself



Future Career



職業字典

Your first Job-tionary



主辦機構：



香港青年協會
the hongkong federation of youth groups

資助：



[聯絡我們](#) | [條款及細則](#) | [功能導覽](#)



[主頁](#)

[網站簡介](#)

[職業搜尋](#)

[職業頻道](#)

[職業趨勢](#)

[體驗活動](#)

[訂購服務](#)

[學校專區](#)

職業搜尋

[主頁](#) / [職業搜尋](#)



《職業字典》特別設計不同的介入點，讓青年人從不同方向，例如以性格、興趣及職業出發，搜尋職業，以了解該職業的資訊。

從**性格**出發

以Self Directed Search 為基礎，了解6大類型的升學擇業偏向。



從**興趣**出發

以不同興趣尋找與之相關的職業。



從**職業**出發

直接輸入理想職業，了解行業資訊



從興趣出發

此部份會從興趣出發找理想職業，以青年的興趣作為介入點，以另一角度去思考工作的可能性。如果你的興趣 / 喜好是.....

- 觀察
- 駕駛
- 運動
- 動物
- 戶外
- 飲飲食食
- 找錯處
- 建築樓宇
- 計數
- 體力勞動
- 拯救生命
- 刺激冒險
- 模仿
- 伸張正義
- 海洋
- 「坐唔定」
- 坐船
- 游水
- 把東西分類
- 機件裝嵌
- 幫助別人
- 繪畫
- 手藝
- 研究
- 扮靚
- 教導別人
- 管人
- 推理
- 管事
- 砌模型
- 維修
- 電子儀器、零件
- 大自然
- 保護環境
- 創作
- 執拾、整齊乾淨
- 表演
- 寫作
- 健康
- 做實驗
- 天文氣象
- 設計
- 評估
- 了解別人
- 去旅行
- 飛機
- 電腦
- 上網
- 天空
- 時裝
- 潮流
- 佈置家居
- 音樂
- 文字 / 睇書
- 拍攝
- 紙牌遊戲
- 說話
- 照顧別人
- 小朋友
- 外語
- 「駁咀」
- 籌辦活動
- 明星
- 購物
- 打字



從興趣出發

此部份會從興趣出發找理想職業，以青年的興趣作



觀察



駕駛



飲食



找錯處



拯救生命



刺激冒險

從興趣出發

觀察 (透過雙眼察看四周環境)

警察職系

入境事務職系

新聞記者

新聞主播

神秘顧客

攝影記者

①

探
究
型

新聞記者

工作概述 (Job description)

香港有多少份報紙？免費的、賣錢的加起來超過20份吧！又或你已經轉為在網上看報章？無論用哪個方法，總得有人寫這些文字出來，他 / 她叫做記者！

記者是一份非常有挑戰性的工作，素有「鐵腳、馬眼、神仙肚」的外號，因為做記者要長時間等待採訪、眼觀四面、耳聽八方及食不定時，還要周圍走動，日曬雨淋。雖然辛苦，但每日的工作都不同，今日不知明日的新聞，可謂刺激度滿分，絕不沉悶。

你準備好未？



工作入行 (Job entry)

- 大專或大學程度（不一定要修讀新聞系）；
- 修讀與新聞相關學科優先；
- 香港現時有開辦新聞相關課程的有香港大學、香港中文大學、香港浸會大學、香港城市大學、香港理工大學、香港樹仁大學及珠海書院。

工作性質 (Job nature)

- 出外採訪新聞，當中包括人物專訪，及突發事件報道；
- 有機會到境外工作；
- 有些記者工作可能要包括攝影；
- 採訪過後，還需要用文字把採訪材料寫出來，所以文字書寫創作也是記者的指定

Over 150 jobs available



Description

Entry

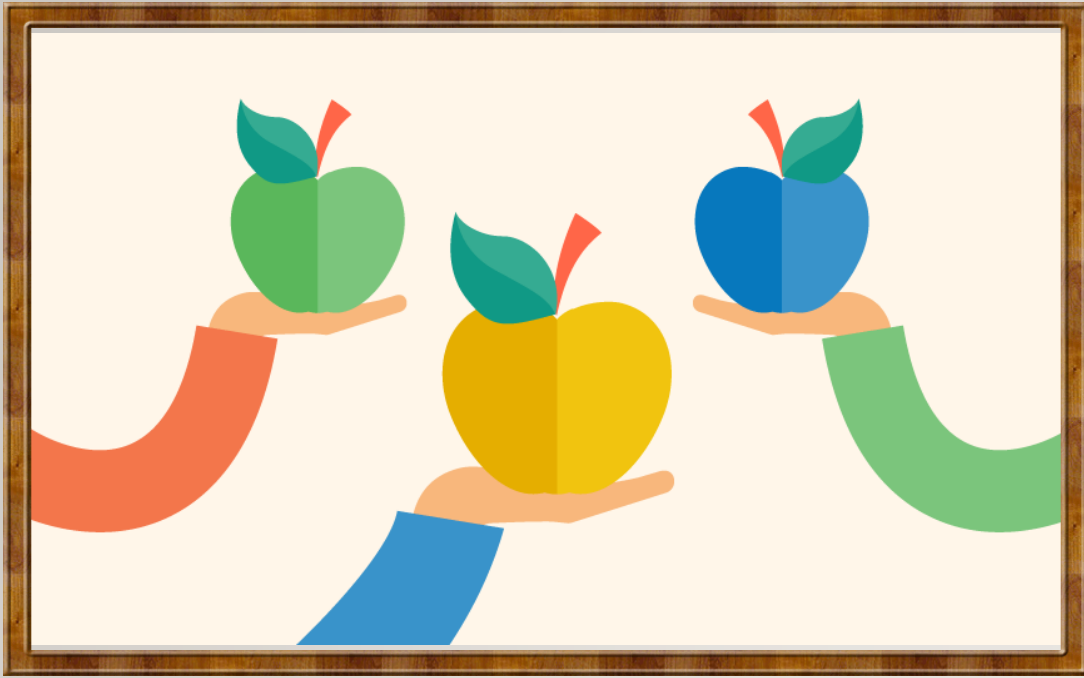
Nature

Requirement

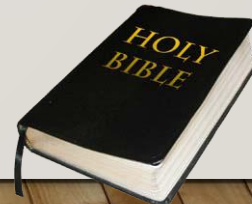
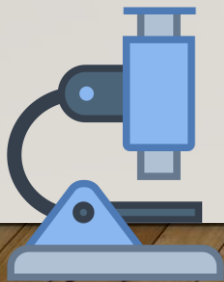
Future

Seek help from ...



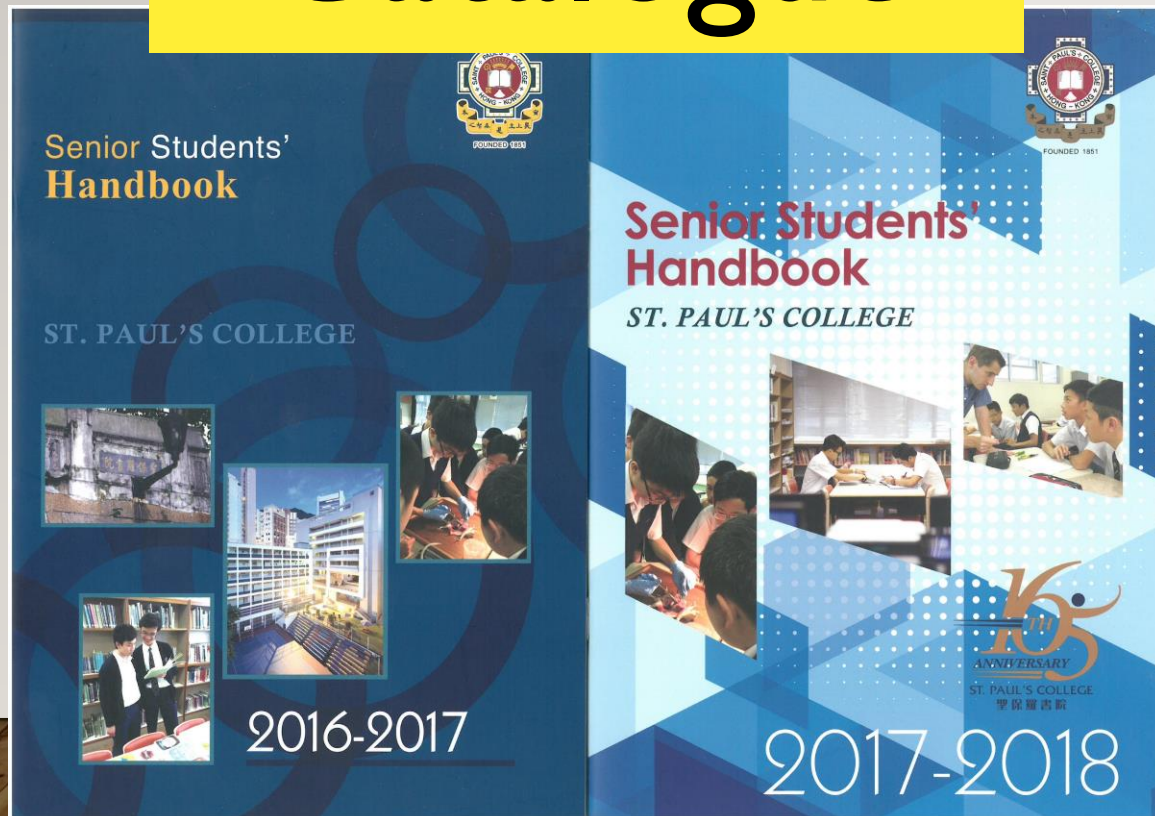


Understand THE ELECTIVES



Understand the electives

SPC Course Catalogue



Teachers

Senior Form
Students

EDB – Curriculum
and Assessment
Guide

EDB – Curriculum and Assessment Guide

Chapter 1	Introduction	1
1.1	Background	1
1.2	Rationale	1
1.3	Interface with Junior Secondary Education and Post-secondary Pathways	3
1.4	Curriculum Aims	3
1.5	Curriculum Objectives	4
1.5.1	Knowledge and understanding	4
1.5.2	Skills	4
1.5.3	Values and attitudes	5
1.6	Broad Learning Outcomes	5
Chapter 2	Curriculum Framework	7
2.1	Design Principles	7
2.2	Curriculum Structure and Organisation	8
2.2.1	Curriculum Content of the Compulsory Part	12
2.2.2	Curriculum Content of the Elective Part	31
Chapter 3	Curriculum Planning	43

1.3 Interface with Junior Secondary Education and Post-secondary Pathways...

The study of Geography in senior secondary schools provides students who will study **Geography** in the universities with a solid conceptual foundation.

EDB – Curriculum and Assessment Guide

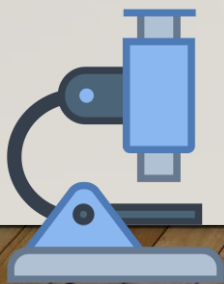
... For those who will enter university to study other subjects (such as **Arts or Social and Environmental Sciences**) ...

EDB – Curriculum and Assessment Guide

...a range of **career choices** in which a global perspective, environmental ethics ... sound sense of space and region are needed. The most obvious examples ...**urban and transport planning, resources and environmental management, tourism and recreation...**

Understand

How the Electives and M1/M2 are related to University Programmes



[HTTP://WWW.JUPA
S.EDU.HK/EN/](http://www.jupas.edu.hk/en/)

Required/Preferred Subjects

- CityU <http://www.admo.cityu.edu.hk/jupas/entreq/bd>
- CU <http://www.oafa.cuhk.edu.hk/adm/jupas/hkdse/admission-requirements/programme-specific>
- UST <http://join.ust.hk/en/admissions/applicant/jupas>
- BU http://ar.hkbu.edu.hk/pros/admiss_schemes/jupas_hkdse/uni_admiss_req_policies/arts/
- EdUHK http://www.ied.edu.hk/degree/app_jupas_dse.htm
- HKU <http://www.aal.hku.hk/admissions/local/admissions-information?page=programme-admissions-information>
- LingU <http://www.ln.edu.hk/admissions/ug/jupas/requirements.php>
- PolyU <http://www5.l.polyu.edu.hk/eprospectus/ug/jupas/programme-requirements>
- OpenU
http://www.ouhk.edu.hk/wcsprd/Satellite?pagename=OUHK/tcSubWeb&c=C_ETPU&cid=191151075800&l=C_CFTS&lid=1385174509933
- Study Subsidy Scheme for Designated Professions / Sectors
<http://www.jupas.edu.hk/en/programme/sssdp/>

Required/Preferred Subjects

Course

Requires

CityU

JS1205

Department of
Electronic
Engineering

One elective subject from:
Biology, Chemistry, Physics,
Information and
Communication Technology
(ICT)
M1/M2

Required/Preferred Subjects

Course

Requires

CU

JS4719

Risk Management
Science

M1/M2

Level 3

Required/Preferred Subjects

Course

Requires

HKU

JS6951

JS6963

Engineering

Physics + M1/2

Level 3 (Preferred)

Required/Preferred Subjects

Course

Requires

HKU

JS6456 Bachelor of
Medicine and
Bachelor of Surgery

Chemistry

Required/Preferred Subjects

Course

Requires

PolyU

JS3612

**BSc (Hons) in
Radiography**

Preferred subj. with highest
weighting:
English, Math., M1/M2,
science subjects

Required/Preferred Subjects

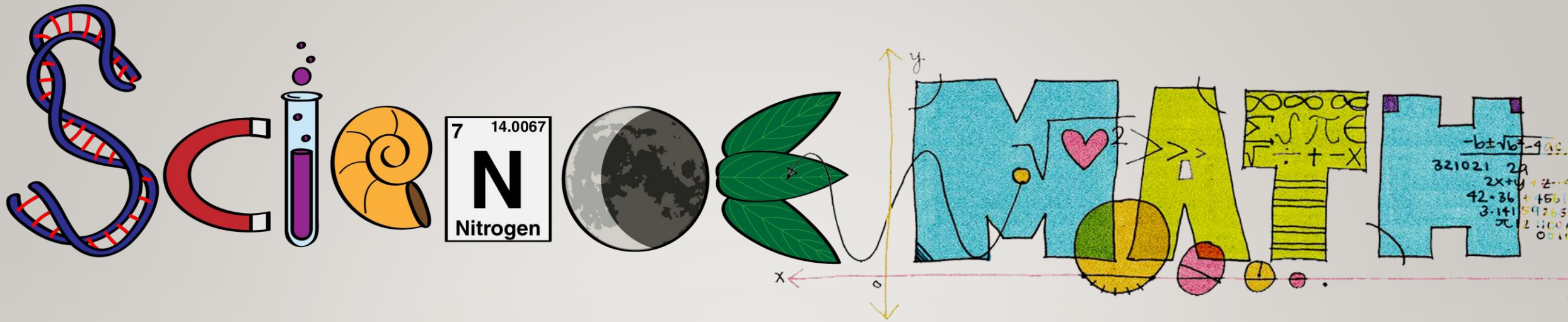
MI/M2 in Admission Scores (As elective)

CityU / PolyU / CUHK / HKUST	All
BU	13
LingU / EdUHK	0
HKU	Around 9

Required/Preferred Subjects

UCAS

<https://www.ucas.com/>



MORE OPTION???

MAYBE

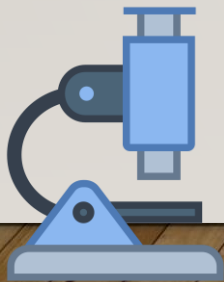




I'M INTERESTED



Understand YOURSELF



Career Talk by

Hong Kong Institution of Engineers (HKIE)

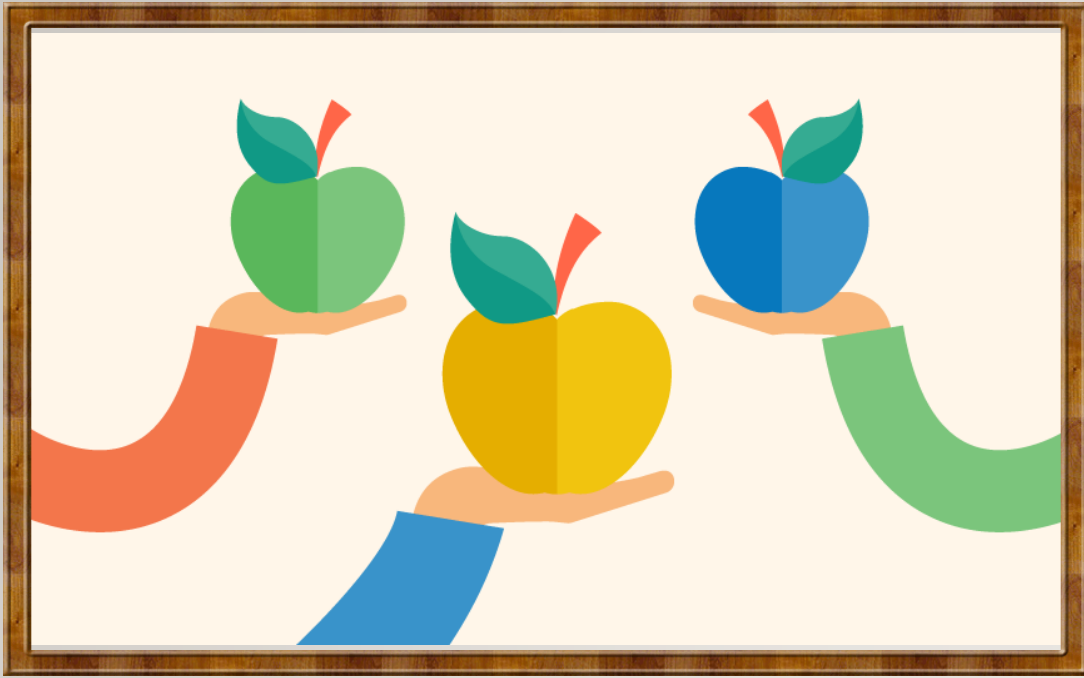


Date: 13 Nov 2017
Time: 3:45 – 4:30 p.m.
Venue: Balcony
Topic: Get Ready to Be an Engineer

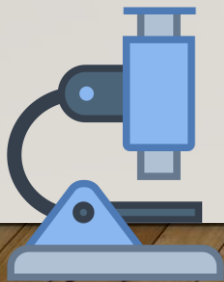


The talk is mainly for F.4 to F.6 students. Junior form students are also welcome. Please complete the Google Form for registration.

<https://goo.gl/forms/kO2OCLWsPXr2rkzo1>

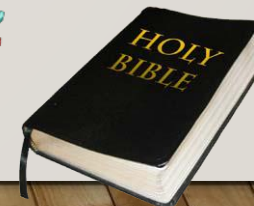
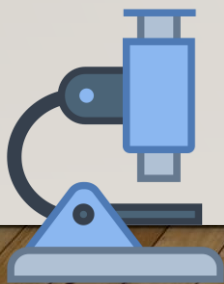


Understand THE ELECTIVES



Understand

How the Electives and M1/M2 are related to University Programmes





學友社
Hok Yau Club

印行六萬六千本 免費贈閱
中三至中五學生適用

高中選科及升學指南 2017

Senior Secondary Subject Choice & Further Studies Guide



緊貼最新考試升學消息

免費訂閱

文憑試e通訊



學友社 Hok Yau Club

學生資訊 · 學友社動態



學友社一站式學生資訊網站
www.student.hk



學友社學生輔導中心
長沙灣麗閣邨麗荷樓地下 129 號



學友社學生專線 (香港電訊轉接)
2503 3399
逢星期一、三、五 晚上7時至9時

Senior Secondary Subject Choice
&

Further Studies Guide
(published in March)

<http://hyc.org.hk/publish/index.php>

Parents Assist
Students in Making
choices



THANK
YOU!

